



comco
systems & automation specialists

Head Office

801 57th Street East
Saskatoon, SK CANADA
S7K 5Z2

US Office

320 Kitty Hawk, Ste 106
Universal City, TX USA
78148

For all inquiries:

Ph: (800) 225 4417

Email: info@comco-controls.com

Congratulations to

Pilgrim's Pride Arcadia, LA
on the their new batching control system with
Liquid Application (PPLA) controls.

Look inside for details on some of our other installations!

Real-Time Maintenance Software

Preventative Maintenance software that your
employees will use!



Save \$ on your power bills

with our Power Management Software



For more information

Fax this page back to 306 652 5099.

I am interested in: _____

Name: _____

Phone: _____

Company Name: _____

Email: _____

or visit our website at: www.comco-controls.com

Upcoming Tradeshows:

International Poultry Expo
Jan 24-26, 2007
Atlanta, GA
Booth: 3043

GEAPS
Feb 25-27, 2007
Grapevine, TX
Booth: 220

Inside:

- 2** Comco News
- 2** Liquid Application Installation in Arkansas
- 3** Feature Automation Systems
- 3** Feed Mill Automation
- 3** Pre-Mix Plant Automation

Comco Information

Look for our new ads in
Feed & Grain and the
Grain Journal!



Come see us at the following tradeshows:

January 24-26
International Poultry Expo
Georgia World Congress Centre
Atlanta
Booth: 3043

February 24-27
GEAPS
Gaylord Texan Hotel
Grapevine Texas
Booth: 220

Liquid Application System Installation (Arkansas)



- 1 liquid for each of the 2 pellet lines
- Application rate is 0.22 lbs / minute
- Scales for inventory reconciliation
- Remotely supported
- Pre assembled, pre-wired and pre-calibrated for easy installation and quick start up
- Error +/- 1%

Overview September 19, 2006
3:49:19 PM

L1 Liquid System	L2 Liquid System
Total: <input type="text"/>	Total: <input type="text"/>
Curve: <input type="checkbox"/>	Curve: <input type="checkbox"/>
T/hr: <input type="text"/>	T/hr: <input type="text"/>
Liquid Totals	Liquid Totals
Inclusion Setpoint: <input type="text"/>	Inclusion Setpoint: <input type="text"/>
Current Inclusion: <input type="text"/>	Current Inclusion: <input type="text"/>
Liquid Total: <input type="text"/>	Liquid Total: <input type="text"/>
Liquid Rate: <input type="text"/>	Liquid Rate: <input type="text"/>
Tote Scale: <input type="text"/>	

F1 END BATCH F3 PRINTING F7 ALARM F8 MENU

ALARM HISTORY September 12, 2006
8:20:00 AM

Alarm Time	Message
12/09/2006 8:20 AM	Line 1 - No Flow Detected
12/09/2006 9:47 PM	Product 1 - Low Level Alarm

F1 OVER F4 PRINT F7 ALARM F8 MENU

POST PELLETTING SYSTEM

ALARM HORN ALARM SILENCE

LINE #1 LIQUID PUMP LINE #2 LIQUID PUMP

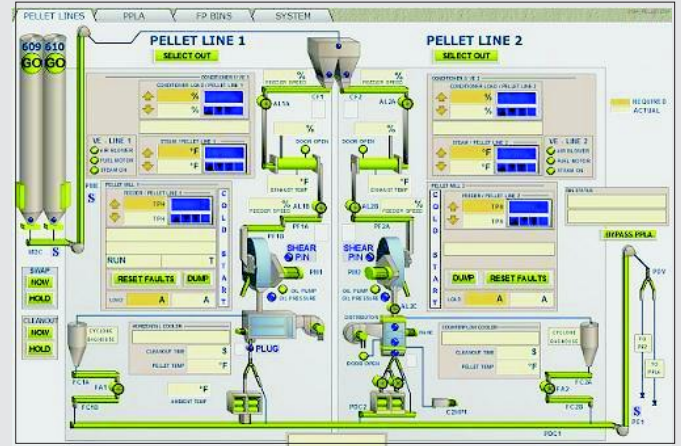
OFF ON RUNNING OFF ON RUNNING

Featured Automation Systems

Pilgrim's Pride, Arcadia LA USA: Feed Mill



- Summary:
- Allen Bradley PLC
- 2 PCs running Windows XP Pro
- Pelleting Automation
- Seamless automation of existing Liquid Application System into pelleting controls
- Full remote support capabilities



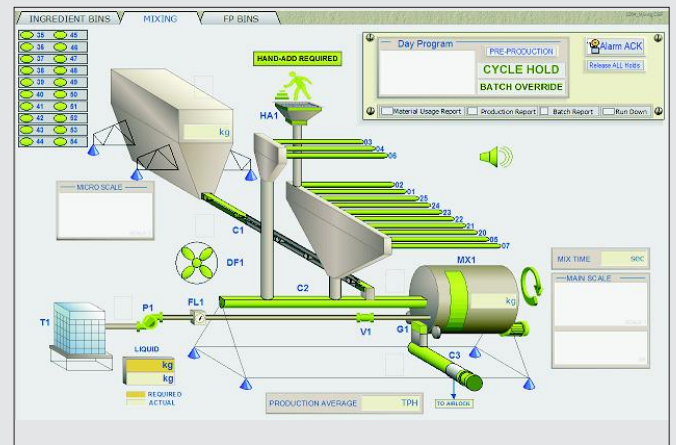
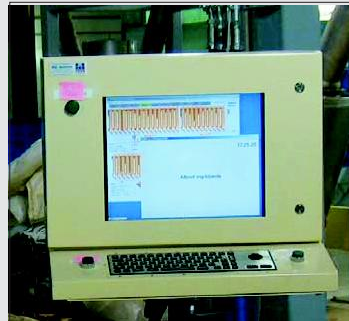
"The Comco controls system has greatly decreased the time it takes to perform our everyday tasks such as changing rations."

- Ricky Jenkins (Facility Manager)

Maxima Feeds, Morden MB Canada: Pre-Mix Plant



- Summary:
- Allen Bradley PLC
- 3 PCs running Windows XP Pro
- Batching Automation
- Bar Code Reader and PC Hand Add Station
- Full remote support capabilities



"The Comco system has provided freedom to our operators so that they can focus on other tasks within the plant while the system is running. As well, the advanced reporting & traceability features helped us to achieve full HACCP certification. Not to mention, the service & support from Comco has also been excellent."

- Rick Driedger (Production Manager)



Feed Mill Automaton

Plant Process Control

Micro Ingredient Systems

Liquid Application Systems

Automated Power Management

Custom Electrical Control Systems

Automated Maintenance Management