



**comco**  
*systems & automation specialists*

**Head Office**  
801 57th Street East  
Saskatoon, SK CANADA  
S7K 5Z2

**US Office**  
320 Kitty Hawk, Ste 106  
Universal City, TX USA  
78148

**For all inquiries:**  
**Ph: (800) 225 4417**  
**Email: [info@comco-controls.com](mailto:info@comco-controls.com)**

**Come visit us at the GEAPS Expo  
(Grain Elevator and Processing Society)  
Feb 24-26, Qwest Convention Ctr, Omaha, NE!  
Booth # 220**

**We will be showing:**

- Preventative Maintenance Software
- Power Management Software
- Grain and Feed Facility Automation systems

For more information on the GEAPS Expo  
go to [www.comco-controls.com](http://www.comco-controls.com) and click on the GEAPS Expo link.



**Congratulations  
to Kent Feeds (Iowa)  
and Farmers Cooperative  
(Kansas) on your new control systems!  
See page 3.**



**Congratulations to Louis Dreyfus Canada  
for installing Comco's Maintenance Software and Power  
Monitoring systems in all 10 Western Canadian facilities!  
See page 2.**

**Preventative Maintenance Software**

web based & easy to use  
with no licensing fees!



**Power Management Software**

save \$ every month  
with our Power Management Software!



Send us your power bills & let us assess your facility

See Page 2

For more information fax this page to 306 652 5099.

I am interested in: \_\_\_\_\_  
Name: \_\_\_\_\_ Phone: \_\_\_\_\_  
Company: \_\_\_\_\_ Email: \_\_\_\_\_

Visit our website at: [www.comco-controls.com](http://www.comco-controls.com)

## Featured Products



**Louis Dreyfus Canada Ltd  
has installed  
ComGuard and PowerGuard  
at all 10 of their  
Western Canadian locations!**



**“I have used ComGuard to efficiently build a maintenance history of all areas of our plant. I now have the ability to forecast upcoming repairs by referring to past completed maintenance.”**

*- Ray Baumann General Manager, Aberdeen SK, Louis Dreyfus Canada Ltd.*

### **Web-based Technology**

Access this system from anywhere (great for remote managers). Compare information for multiple locations

### **Real-Time Capabilities**

Track:

- number of motor starts
- actual run hours
- calendar days

### **Know your Maintenance History**

Have a comprehensive maintenance history throughout the facility on every piece of equipment.

### **Organize Maintenance Manuals**

Save all maintenance documents & manuals within the program. Download supplier documents / maintenance instructions for everyone to access.

**This web based system provides remote managers the ability to easily access and monitor each facility without having to make a trip to site!**



PowerGuard is an alert and monitoring tool that allows you to track your facility's efficient use of electrical power and the quality of power entering your facility.

PowerGuard can help you to save hundreds, or even thousands of dollars per month by helping you correct inefficiencies, spread out your power demand, increase your power factor, and prevent motor burnouts.

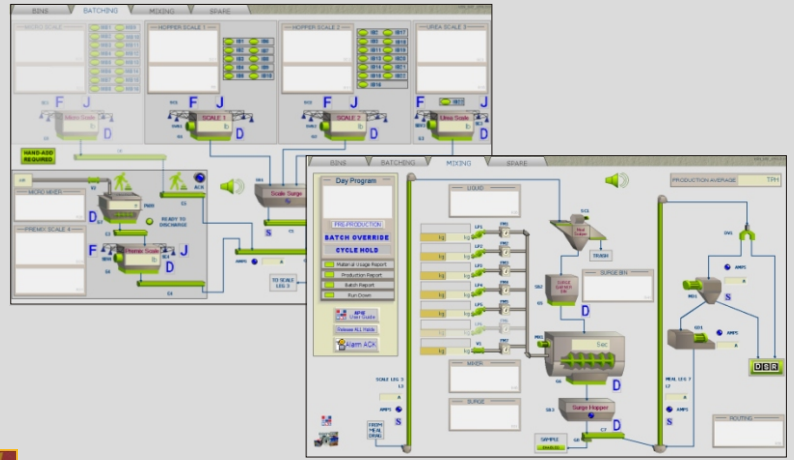
- **Track Power Factor**
- **Track Power Quality**
- **Optimize Power Usage**
- **Minute by Minute Charting**

**Let us do an assessment  
of your facility and show  
you how to save \$ on your  
power bills!**



# Automation Systems

## Feed Mill: Waterloo, IA -Batching Control System-



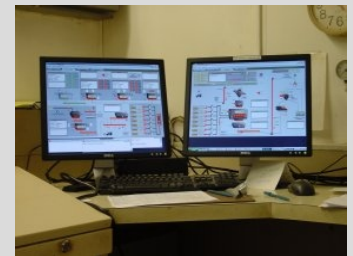
### Project Summary:

- Allen-Bradley PLC
- NEMA rated PLC panel designed & built by Comco

Comprehensive software training was provided throughout the installation process.



PDA Control



Control Station

### Full Traceability

### 24/7 Support

### Wireless Hand-Held (PDA) Capabilities

**"The system is excellent.  
We are totally satisfied!"**  
- Jay Feddersen, Project Engineer

## Grain Facility: Hanover, KS -Front to Back Automation -



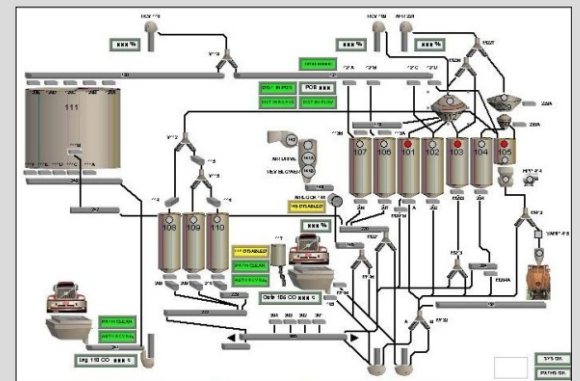
This facility was originally commissioned in 2000.

There was an expansion in 2002 and there will be another expansion in early 2008.



### Project Summary:

- Electrical control designs
- Engineering
- Project management
- PLC & HMI programming
- PLC panel manufacturing
- On-site commissioning and training



Control Screens

CLEAN OUT TIME, sec.									
65 sec	LEG 109 PATH	30 sec	GATE 121B						
65 sec	LEG 110 PATH	30 sec	GATE 121C						
85 sec	CONVEYOR 113	30 sec	GATE 121D						
85 sec	CONVEYOR 114								
85 sec	CONVEYOR 115								
120 sec	CONVEYOR 116								
120 sec	CONVEYOR 120								
85 sec	CONVEYOR 121								
120 sec	CONVEYOR 240								

GATE CALIBRATION									
GATE 105	GATE 201A	GATE 202	GATE 206	GATE 207					
CLOSED	CLOSED	CLOSED	CLOSED	CLOSED					
OPEN	OPEN	OPEN	OPEN	OPEN					
ACTIVE	ACTIVE	ACTIVE	ACTIVE	ACTIVE					
%	%	%	%	%					
CAL 105	CAL 201A	CAL 202	CAL 206	CAL 207					
GATE 208	GATE 209	GATE 210	GATE 301	GATE 302					
CLOSED	CLOSED	CLOSED	CLOSED	CLOSED					
OPEN	OPEN	OPEN	OPEN	OPEN					
ACTIVE	ACTIVE	ACTIVE	ACTIVE	ACTIVE					
%	%	%	%	%					
CAL 208	CAL 209	CAL 210	CAL 301	CAL 302					

Utility Screens

**"The Comco automation system saves us time and is very reliable."**

- Ernie Hroch, Location Manager



**Feed Mill Automation**

**Plant Process Controls**

**Grain Facility Automation**

**Micro Ingredient Systems**

**Liquid Application Systems**

**Power Management Software**

**NEW! Ethanol Facility Automation**

**Preventative Maintenance Software**

**Come see us at the GEAPS Expo in Omaha NE! See inside for more information!**