

July 2008



comco

systems & automation specialists

Head Office
801 57th Street East
Saskatoon, SK, Canada
S7K 5Z2

US Office
320 Kitty Hawk, Ste 106
Universal City, TX USA
78148

For all inquiries:
Ph: (800) 225-4417
Email: info@comco-controls.com
www.comco-controls.com



GEAPS Expo 2009 March 1-3, 2009

Come see us in St. Louis! We will be showing our:

- Grain elevator and feedmill control systems
- Maintenance software
- Power management software

We hope to see you there!



Congratulations to Farmer's Cooperative (Kansas) on your new control system!

See Page 3.



Congratulations to the Seales Feed Mill in New Zealand on the installation of their new feed mill upgrade featuring Comco's fully automated system!

See Page 3 for more information.



Preventative Maintenance Software

web based & easy to use
with no licencing fees!



Preventative Maintenance Software
Online Demos Available!

See Page 2 for more information

Power Management Software

save \$ every month
with our Power Management Software



Power Alert System

Send us your power bills & let us assess your facility
for free!

For more information fax this page back to (306) 652-5099

I am interested in: _____

Name: _____ **Phone:** _____

Company: _____ **Email:** _____



Preventative Maintenance Software



Power Alert System

Louis Dreyfus Canada Ltd. has installed ComGuard and PowerGuard at all 10 of their Western Canadian locations.

"I have used ComGuard to efficiently build a maintenance history of all areas of our plant. I now have the ability to forecast upcoming repairs by referring to past completed maintenance."

**- Ray Baumann
General Manager, Aberdeen, SK
Louis Dreyfus Canada Ltd.**

Web-based Technology

Access this system from anywhere (great for remote managers). Compare information for multiple locations.

Real-Time Capabilities

Track:

- number of motor starts
- actual run hours
- calendar days

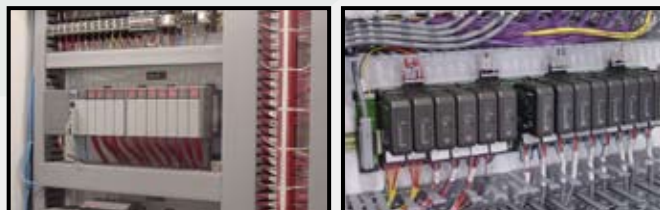
Know your Maintenance History

Have a comprehensive maintenance history throughout the facility on every piece of equipment.

Organize Maintenance Manuals

Save all maintenance documents and manuals within the program. Download supplier documents/ maintenance instructions for everyone to access.

This web based system provides remote managers the ability to easily access and monitor each facility without having to make a trip to site!



PowerGuard is an alert and monitoring tool that allows you to track your facility's efficient use of electrical power and the quality of power entering your facility.

PowerGuard can help you to save hundreds, or even thousands of dollars per month by helping you correct inefficiencies, spread out your power demand, increase your power factor, and prevent motor burnouts.

Track:

- Power Factor
- Power Quality
- Optimize Power usage
- Minute by Minute Charting

Did you know...

Not only do utility companies charge for power consumption, but most also *charge extra* for:

- **Power Factor less than 90%**
- **Peak kVA and / or kW levels**

These peak levels may be reset monthly or you may pay at that peak level for an entire year!

Let us do an assessment of your facility and show you how easy it is to save \$ on your power bills!

AUTOMATION SYSTEMS

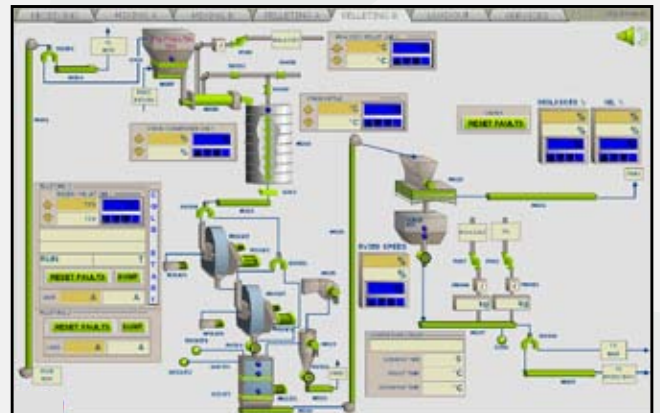


Feed Mill: Morrinsville, NZ Front to Back Automation

Project Summary:

- Electrical Control Design
- PLC and HMI Programming
- On-site Commissioning and Training

Full control of Receiving, Batching, Post-Grinding, and Pelleting has already been completed, with full control of the PPLA and Loadout to be completed later this year.



“Comco’s involvement with the development and automation of our new feed mill has been fantastic from the start. They bring a thoughtful and thorough approach to a very complicated process and ensure all dialogue, correspondence, work commissioning and support is of the highest professional standard and world’s best practice.”

-Ross Hyland
Managing Director, Seales Ltd.

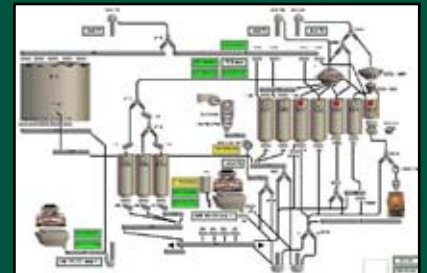
Grain Facility: Hanover, KS Front to Back Automation

Project Summary:

- Electrical Control Design
- Engineering
- Project Management
- PLC and HMI Programming
- PLC Panel Manufacturing
- On-site Commissioning and Training

This facility was originally commissioned in 2000.

There was an expansion in 2002 and another in April of 2008.



CLEAN OUT TIME, sec.					
85 sec	EGU 100 P413	30 sec	GATE 1210		
85 sec	EGU 100 P413	30 sec	GATE 121C		
85 sec	CONVEYOR 113	30 sec	GATE 1210		
85 sec	CONVEYOR 113				
120 sec					
120 sec					
85 sec					
120 sec					

GATE CALIBRATION					
GATE 101	GATE 204A	GATE 205	GATE 206	GATE 207	
TESTING	TESTING	TESTING	TESTING	TESTING	
OK	OK	OK	OK	OK	
0%	0%	0%	0%	0%	
CAL	CAL	CAL	CAL	CAL	
GATE 208	GATE 209	GATE 210	GATE 211	GATE 212	
TESTING	TESTING	TESTING	TESTING	TESTING	
OK	OK	OK	OK	OK	
0%	0%	0%	0%	0%	
CAL	CAL	CAL	CAL	CAL	



comco

systems & automation specialists

control freaks

...and proud of it

Feed Mill Automation

Plant Process Controls

Grain Facility Automation

Micro Ingredient Systems

Liquid Application Systems

Power Management Software

Preventative Maintenance Software

www.comco-controls.com

